

# The Leading EDGE

October 2009

Issue Number 10



## Contact us:

### Field address:

Unit 2119-MAF  
3170 Airmans Dr.  
Fort Pierce, FL 34946

### Support address:

Mission Aviation  
Fellowship  
P.O. Box 47  
Nampa, ID 83653

### Email:

tedgerton@maf.org  
jedgerton@maf.org

### On the Web:

edgertonblog.blogspot.com  
www.maf.org/edgerton

### On Facebook as:

Jennifer Edgerton

## What we Do

Some fly with MAF to save hours on the road or ferry boats. Some fly because they have no other viable options. No matter who sits in those seats, it is our prayer that what we do would bring glory and honor to God, and impact their lives and ministries in a positive way. To give an idea of the use of our airplanes, we've listed some of the flights made last week and a detail or two about some of them:

**Monday:** 7 flights—*Pignon, Hinche,* and *La Gonave*. Pignon flights took a medical team to the hospital there.

**Tuesday:** 6 flights—*Jacmel, Hinche,* *Pignon,* and *Oanamithe*. A work team chartered two of the Hinche flights.

**Wednesday:** 6 flights—*Pignon* and *Hinche*. All three Hinche flights were for a work team.

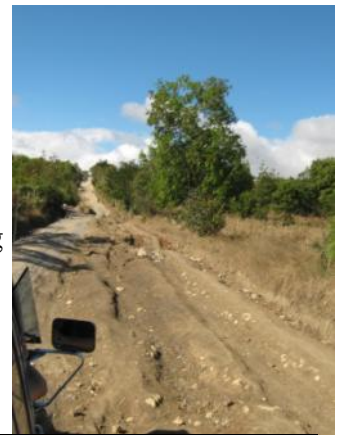
**Thursday:** 3 flights—*La Gonave,* *Hinche,* and *Cap Hatien*. The body of a deceased woman was taken home.

**Friday:** 6 flights—*Hinche, Pignon, La Gonave,* and *Oanamithe*. Monday's Pignon medical team returned to Port-au-Prince and a missionary flew home to La Gonave instead of taking the ferry.

**Saturday:** 3 flights—A dental team returned from *La Gonave* and a Haitian pastor and family flew home to *Jeremie*.

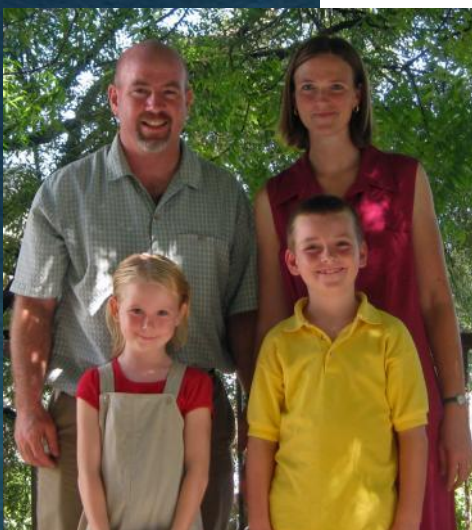
## Our Source

What do *you* do when life gets bumpy? Much of the time, in our daily routines it seems like we can turn on "cruise control." The curves we meet in our circumstances aren't too sharp and the speed bumps and potholes few. In Haiti, we have some nicely paved roads, but we also have many roads that subject our car to countless potholes and ruts. That is so much like life. When the road is smooth, we cruise along without giving much thought to the bumps that aren't there. But when life sends along its potholes, the way we react shows a lot about the Source of our strength.



*Ruts in the road between Pignon and Hinche. We couldn't take pictures of the really bad spots since we had to hang on so diligently.*

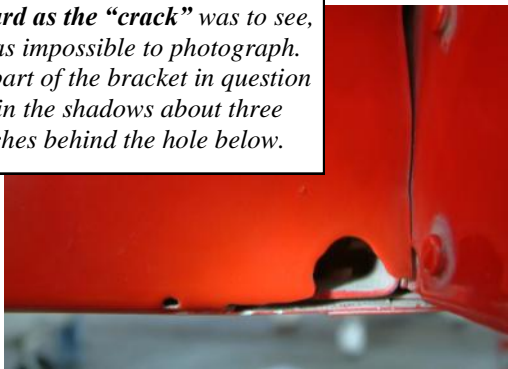
In the Edgerton family our "potholes" are really little ripples in the road, but when these ripples keep piling up, the road can seem pretty rough. Our ripples are minor inconveniences like flu, poor electricity that burns out electronics, the electric company confiscating our electric meter for reasons not yet determined, bumpy integration into school for the kids, or adaptation to powdered milk. We want to thank you who pray for us regularly, because the road seems smoother and we more readily remember that the One who is driving us on this journey will not leave us abandoned along the roadside.



## Prayer & Praise

1. In our last letter we asked you to remember Todd, along with Michael Broyles, as they flew to Florida to change the engine on HH-PTL. All went well, and they arrived safely back on August 17.
2. We mentioned that ministry support donations had been down a bit. It was exciting to see giving reach our goal in both August and September. Thank you SO much for your continued prayer and financial support.
3. Jennifer will get to attend her littlest sister's November wedding. Todd, Kyle, and Megan will look forward to her safe return.
4. Please keep Kyle and Megan in your prayers as they are still adjusting to a relatively new school and new classmates. Both kids have great teachers.
5. We would be happy to have you pray for safety as we travel about the city. There are lots of people and vehicles crammed onto small roads, greatly reducing the "cushion" between everybody. Frequently it seems like it wouldn't take much to bump somebody, which would escalate into a major problem for us no matter who was at fault.
6. Pray for David and Christine Harms, a new pilot/mechanic couple assigned to Haiti. They are still raising the last 25% of their

*As hard as the "crack" was to see, it was impossible to photograph. The part of the bracket in question is in the shadows about three inches behind the hole below.*



## Asking Questions

"Hey Todd, check this out." Michael had been inspecting an area of the wing that MAF knows is prone to cracking. Shining a flashlight through a tiny hole, I saw nothing at first. Then... I spotted the crack nearly half an inch long in the bracket that attaches the aileron to the wing. Because of its location, the crack was not easy to see, and even harder to examine closely. At times it almost looked like there wasn't a crack. At other times, there could hardly be any doubt.

Finally, our Aviation Services department at MAF headquarters in Nampa, ID helped us by asking questions that led us to realize what we were seeing was the edge of a weld

in a steel reinforcement bracket.

This made me remember that an important part of solving a problem is asking the right questions. For example, if I am having problems in my relationships with other people, it is easy to try to fix it by being nicer. But what I frequently find is that I should be asking, "How is my relationship with Jesus?" If my time spent with the Lord is poor, it pretty much follows that my relationships with others will turn sour as well. Ask the right questions to reach proper conclusions. Otherwise, you could end up trying to fix what isn't broken.



*HH-PTL runs its new engine for the first time. We changed the engine in Fort Pierce, Florida, at Missionary Flights International's beautiful hangar.*